



# The Farnham

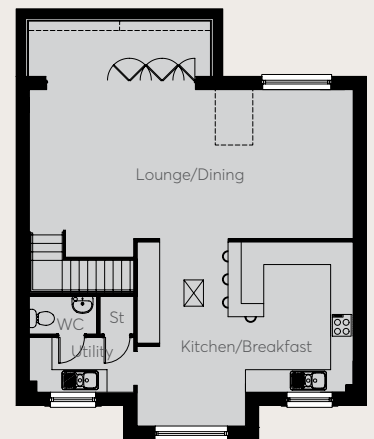
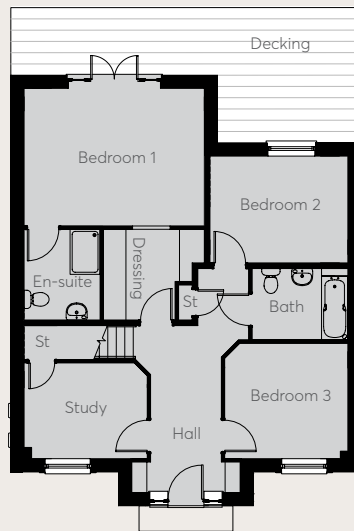


## GROUND FLOOR

Bedroom 1	4.80m x 3.66m	15'9" x 12'0"
Bedroom 2	3.67m x 2.85m	12'1" x 9'4"
Bedroom 3	3.28m x 3.08m	10'9" x 10'1"
Study	3.28m x 2.55m	10'9" x 8'4"

## FIRST FLOOR

Kitchen/ Breakfast	5.75m x 4.90m	18'10" x 16'1"
Lounge/Dining	8.62m x 3.97m	28'3" x 13'0"



**CONSUMER  
CODE FOR  
HOME BUILDERS**  
[www.consumercode.co.uk](http://www.consumercode.co.uk)



**EDENSTONE  
HOMES**

Customers should note that this illustration is representative only and should be treated as general guidance, it should not be relied on to show ownership of boundaries, easements or wayleaves. It cannot be relied upon as accurately describing any of the Specified Matters prescribed by any Order made under the Property Misdescription Act 1991. Nor does it constitute a contract or a warranty. Detailed plans and specifications are available upon request. Housetype CGI images are designed to give an impression of the development and our housetypes - they may not reflect a specific plot and do not form part of any contract. Final finishes, landscaping and detail will vary. All dimensions have been calculated to their maximum. This information has been provided in good faith, however all layouts and measurements are approximate only. Some house types include areas of reduced headroom. Bathroom and kitchen layouts are indicative only and designs may change due to our process of continuous product development.

# The Broughton



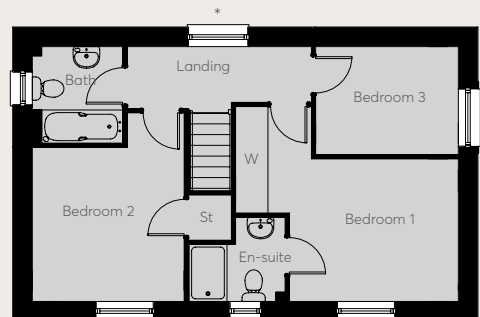
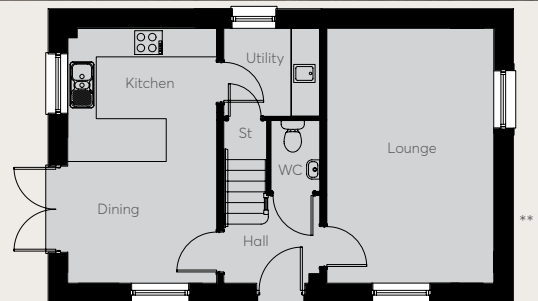
## GROUND FLOOR

Kitchen	3.13m x 2.80m	10'3" x 9'2"
Dining	3.13m x 2.56m	10'3" x 8'5"
Lounge	5.36m x 3.51m	17'7" x 11'6"

## FIRST FLOOR

Bedroom 1	4.63m x 3.00m	15'2" x 10'1"
Bedroom 2	3.24m x 3.19m	10'8" x 10'6"
Bedroom 3	3.00m x 2.27m	9'10" x 7'6"

Please note: Plot 6 variation is a semi-detached property, with no window to ground floor utility room and no window to first floor landing, as indicated by \* and has an additional window to lounge as indicated by \*\*



**CONSUMER  
CODE FOR  
HOME BUILDERS**

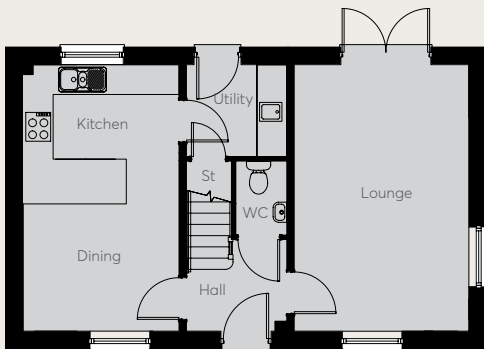
[www.consumercode.co.uk](http://www.consumercode.co.uk)



**EDENSTONE  
HOMES**

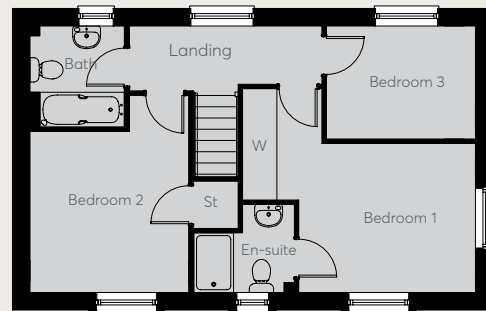
Customers should note that this illustration is representative only and should be treated as general guidance, it should not be relied on to show ownership of boundaries, easements or wayleaves. It cannot be relied upon as accurately describing any of the Specified Matters prescribed by any Order made under the Property Misdescription Act 1991. Nor does it constitute a contract or a warranty. Detailed plans and specifications are available upon request. Housetype CGI images are designed to give an impression of the development and our housetypes - they may not reflect a specific plot and do not form part of any contract. Final finishes, landscaping and detail will vary. All dimensions have been calculated to their maximum. This information has been provided in good faith, however all layouts and measurements are approximate only. Some house types include areas of reduced headroom. Bathroom and kitchen layouts are indicative only and designs may change due to our process of continuous product development.

# The Burlington



## GROUND FLOOR

Kitchen	3.13m x 2.80m	10'3" x 9'3"
Dining	3.13m x 2.54m	10'3" x 8'4"
Lounge	5.36m x 3.51m	17'7" x 11'6"



## FIRST FLOOR

Bedroom 1	4.64m x 3.00m	15'2" x 10'1"
Bedroom 2	3.24m x 3.19m	10'8" x 10'6"
Bedroom 3	3.00m x 2.27m	9'10" x 7'6"

**CONSUMER  
CODE FOR  
HOME BUILDERS**

[www.consumercode.co.uk](http://www.consumercode.co.uk)



**EDENSTONE  
HOMES**

Customers should note that this illustration is representative only and should be treated as general guidance, it should not be relied on to show ownership of boundaries, easements or wayleaves. It cannot be relied upon as accurately describing any of the Specified Matters prescribed by any Order made under the Property Misdescription Act 1991. Nor does it constitute a contract or a warranty. Detailed plans and specifications are available upon request. Housetype CGI images are designed to give an impression of the development and our housetypes - they may not reflect a specific plot and do not form part of any contract. Final finishes, landscaping and detail will vary. All dimensions have been calculated to their maximum. This information has been provided in good faith, however all layouts and measurements are approximate only. Some house types include areas of reduced headroom. Bathroom and kitchen layouts are indicative only and designs may change due to our process of continuous product development.



# The Alveston



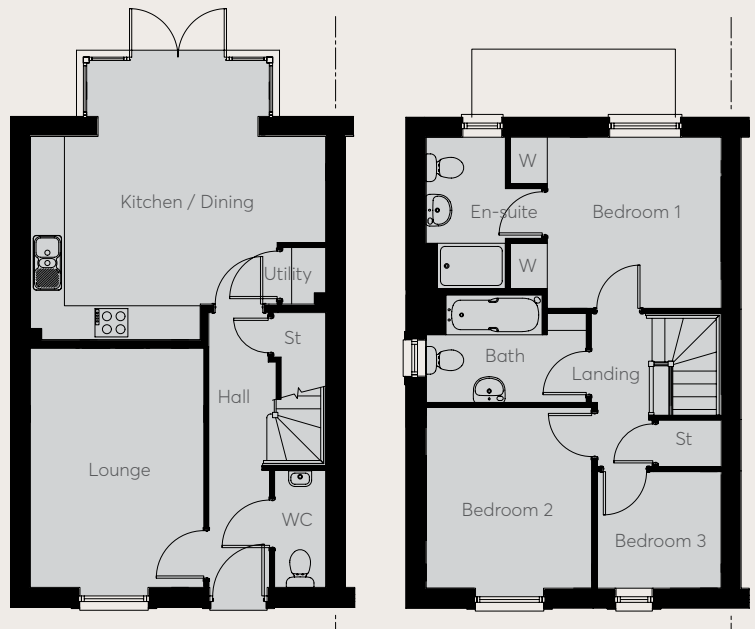
CGI shows two semi-detached Alveston homes. Elevational treatments may vary by plot.

## GROUND FLOOR

Kitchen / Dining	5.20m x 4.92m	17'1" x 16'2"
Lounge	4.21m x 3.06m	13'10" x 10'0"

## FIRST FLOOR

Bedroom 1	3.72m x 3.02m	12'2" x 9'11"
Bedroom 2	3.19m x 2.92m	10'5" x 9'7"
Bedroom 3	2.18m x 2.05m	7'2" x 6'9"



**CONSUMER CODE FOR HOME BUILDERS**  
[www.consumercode.co.uk](http://www.consumercode.co.uk)



Customers should note that this illustration is representative only and should be treated as general guidance, it should not be relied on to show ownership of boundaries, easements or wayleaves. It cannot be relied upon as accurately describing any of the Specified Matters prescribed by any Order made under the Property Misdescription Act 1991. Nor does it constitute a contract or a warranty. Detailed plans and specifications are available upon request. Housetype CGI images are designed to give an impression of the development and our housetypes - they may not reflect a specific plot and do not form part of any contract. Final finishes, landscaping and detail will vary. All dimensions have been calculated to their maximum. This information has been provided in good faith, however all layouts and measurements are approximate only. Some house types include areas of reduced headroom. Bathroom and kitchen layouts are indicative only and designs may change due to our process of continuous product development.