



EDEN'S GREEN

The Kingsholm



Computer generated image of Kingsholm house type, elevational treatments may vary

GROUND FLOOR

Kitchen	4.94m x 3.55m	16'3" x 11'8"
Family / Breakfast	6.94m x 3.48m	22'9" x 11'5"
Lounge	4.93m x 4.22m	16'2" x 13'10"
Dining	3.82m x 3.01m	12'6" x 9'11"

FIRST FLOOR

Bedroom 1	4.51m x 4.28m	14'10" x 14'0"
Bedroom 2	3.75m x 2.76m	12'4" x 9'1"
Bedroom 3	3.48m x 2.56m	11'5" x 8'5"
Bedroom 4	3.46m x 2.17m	11'4" x 7'1"



**CONSUMER
CODE FOR
HOME BUILDERS**

www.consumercode.co.uk

Please note, plot 1 benefits from extra side windows as indicated by "x"
Family / Breakfast (into bay) 7.40m x 3.48m 24'3" x 11'5"



EDENSTONE

Customers should note that this illustration is representative only and should be treated as general guidance, it should not be relied on to show ownership of boundaries, easements or wayleaves. It cannot be relied upon as accurately describing any of the Specified Matters prescribed by any Order made under the Property Misdescription Act 1991. Nor does it constitute a contract or a warranty. Detailed plans and specifications are available upon request. Housetype CGI images are designed to give an impression of the development and our housetypes - they may not reflect a specific plot and do not form part of any contract. Final finishes, landscaping and detail will vary. All dimensions have been calculated to their maximum. This information has been provided in good faith, however all layouts and measurements are approximate only. Some house types include areas of reduced headroom. Bathroom and kitchen layouts are indicative only and designs may change due to our process of continuous product development.



EDEN'S GREEN

The Monmouth



Computer generated image of Monmouth house type, elevational treatments may vary

GROUND FLOOR

Kitchen	4.77m x 3.21m	15'8" x 10'6"
Family / Dining	5.41m x 4.77m	17'9" x 15'8"
Lounge	5.14m x 3.65m	16'10" x 12'0"
Study	2.95m x 2.76m	9'8" x 9'1"

FIRST FLOOR

Bedroom 1	3.76m x 3.29m	12'4" x 10'9"
Dressing	2.88m x 2.38m	9'6" x 7'10"
Bedroom 2	4.34m x 2.67m	14'3" x 8'9"
Bedroom 3	4.29m x 2.67m	14'1" x 8'9"
Bedroom 4	3.39m x 2.66m	11'1" x 8'9"



**CONSUMER
CODE FOR
HOME BUILDERS**

www.consumercode.co.uk

Please note, plots 25, 34 & 41 benefit from extra side windows as indicated by "##"

Family / Breakfast (into bay) 5.84m x 4.77m 19'2" x 15'8"



EDENSTONE

Customers should note that this illustration is representative only and should be treated as general guidance, it should not be relied on to show ownership of boundaries, easements or wayleaves. It cannot be relied upon as accurately describing any of the Specified Matters prescribed by any Order made under the Property Misdescription Act 1991. Nor does it constitute a contract or a warranty. Detailed plans and specifications are available upon request. Housetype CGI images are designed to give an impression of the development and our housetypes - they may not reflect a specific plot and do not form part of any contract. Final finishes, landscaping and detail will vary. All dimensions have been calculated to their maximum. This information has been provided in good faith, however all layouts and measurements are approximate only. Some house types include areas of reduced headroom. Bathroom and kitchen layouts are indicative only and designs may change due to our process of continuous product development.



EDEN'S GREEN

The Tintern



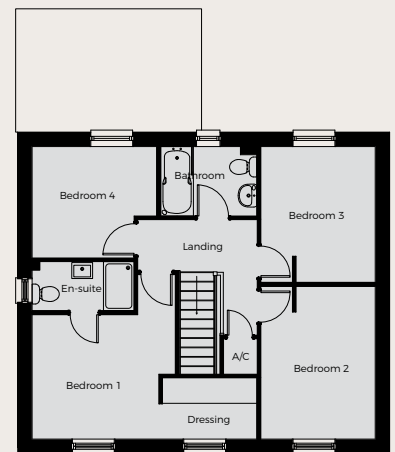
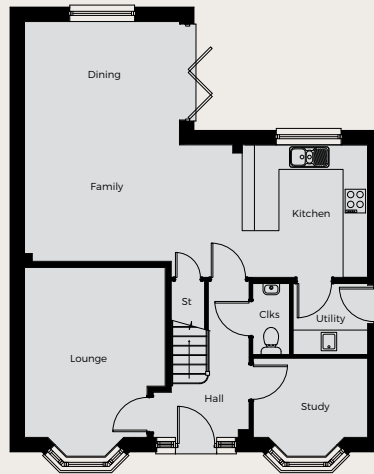
Computer generated image of Tintern house type, elevational treatments may vary

GROUND FLOOR

Kitchen	3.24m x 3.07m	10'8" x 10'1"
Family	5.33m x 3.24m	17'6" x 10'8"
Dining	3.79m x 3.02m	12'5" x 9'11"
Lounge	4.62m x 3.44m	15'2" x 11'4"
Study	2.80m x 2.40m	9'2" x 7'11"

FIRST FLOOR

Bedroom 1	3.50m x 3.06m	11'6" x 10'0"
Bedroom 2	3.74m x 2.80m	12'3" x 9'2"
Bedroom 3	3.32m x 2.80m	10'11" x 9'2"
Bedroom 4	3.05m x 2.73m	10'0" x 8'11"



**CONSUMER
CODE FOR
HOME BUILDERS**

www.consumercode.co.uk



EDENSTONE

Customers should note that this illustration is representative only and should be treated as general guidance, it should not be relied on to show ownership of boundaries, easements or wayleaves. It cannot be relied upon as accurately describing any of the Specified Matters prescribed by any Order made under the Property Misdescription Act 1991. Nor does it constitute a contract or a warranty. Detailed plans and specifications are available upon request. Housetype CGI images are designed to give an impression of the development and our housetypes - they may not reflect a specific plot and do not form part of any contract. Final finishes, landscaping and detail will vary. All dimensions have been calculated to their maximum. This information has been provided in good faith, however all layouts and measurements are approximate only. Some house types include areas of reduced headroom. Bathroom and kitchen layouts are indicative only and designs may change due to our process of continuous product development.



EDEN'S GREEN

The Dartford



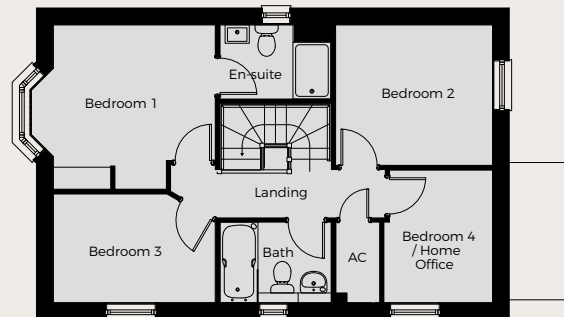
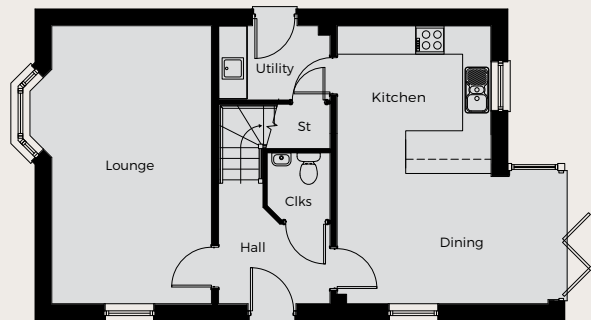
Computer generated image of Dartford house type, elevational treatments may vary

GROUND FLOOR

Kitchen	3.25m x 2.81m	10'8" x 9'3"
Dining	4.45m x 3.05m	14'7" x 10'0"
Lounge	5.86m x 3.83m	19'3" x 12'7"

FIRST FLOOR

Bedroom 1	3.47m x 3.42m	11'5" x 11'3"
Bedroom 2	3.31m x 2.96m	10'10" x 9'9"
Bedroom 3	3.41m x 2.29m	11'2" x 7'6"
Bedroom 4/ Home Office	2.80m x 2.29m	9'2" x 7'6"



**CONSUMER
CODE FOR
HOME BUILDERS**

www.consumercode.co.uk



EDENSTONE

Customers should note that this illustration is representative only and should be treated as general guidance, it should not be relied on to show ownership of boundaries, easements or wayleaves. It cannot be relied upon as accurately describing any of the Specified Matters prescribed by any Order made under the Property Misdescription Act 1991. Nor does it constitute a contract or a warranty. Detailed plans and specifications are available upon request. Housetype CGI images are designed to give an impression of the development and our housetypes - they may not reflect a specific plot and do not form part of any contract. Final finishes, landscaping and detail will vary. All dimensions have been calculated to their maximum. This information has been provided in good faith, however all layouts and measurements are approximate only. Some house types include areas of reduced headroom. Bathroom and kitchen layouts are indicative only and designs may change due to our process of continuous product development.



EDEN'S GREEN

The Chepstow



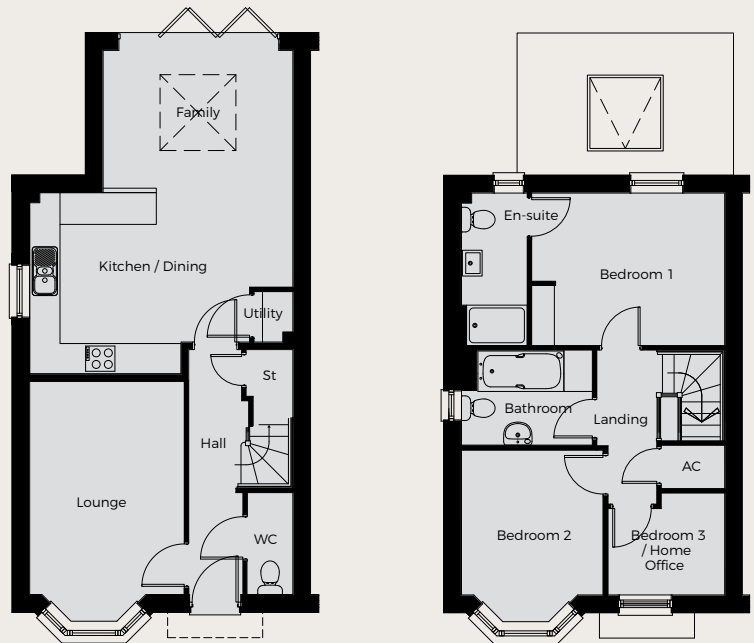
Computer generated image of two Chepstow house types, elevational treatments may vary

GROUND FLOOR

Kitchen / Dining	5.20m x 3.58m	17'1" x 11'9"
Family	3.75m x 2.81m	12'4" x 9'3"
Lounge	4.77m x 3.06m	15'4" x 10'0"

FIRST FLOOR

Bedroom 1	3.82m x 3.02m	12'6" x 9'11"
Bedroom 2	3.42m x 2.80m	11'3" x 9'2"
Bedroom 3 / Home Office	2.31m x 2.02m	7'7" x 6'7"



**CONSUMER
CODE FOR
HOME BUILDERS**

www.consumercode.co.uk



EDENSTONE

Customers should note that this illustration is representative only and should be treated as general guidance, it should not be relied on to show ownership of boundaries, easements or wayleaves. It cannot be relied upon as accurately describing any of the Specified Matters prescribed by any Order made under the Property Misdescription Act 1991. Nor does it constitute a contract or a warranty. Detailed plans and specifications are available upon request. Housetype CGI images are designed to give an impression of the development and our housetypes - they may not reflect a specific plot and do not form part of any contract. Final finishes, landscaping and detail will vary. All dimensions have been calculated to their maximum. This information has been provided in good faith, however all layouts and measurements are approximate only. Some house types include areas of reduced headroom. Bathroom and kitchen layouts are indicative only and designs may change due to our process of continuous product development.