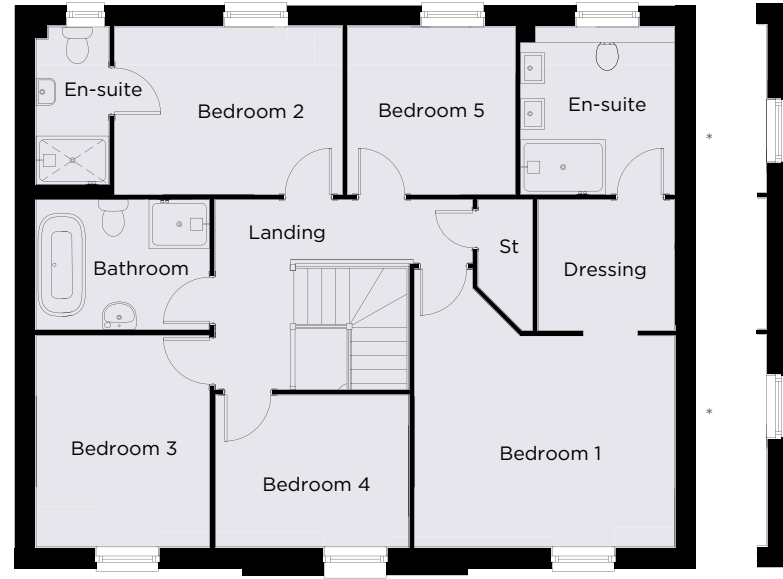
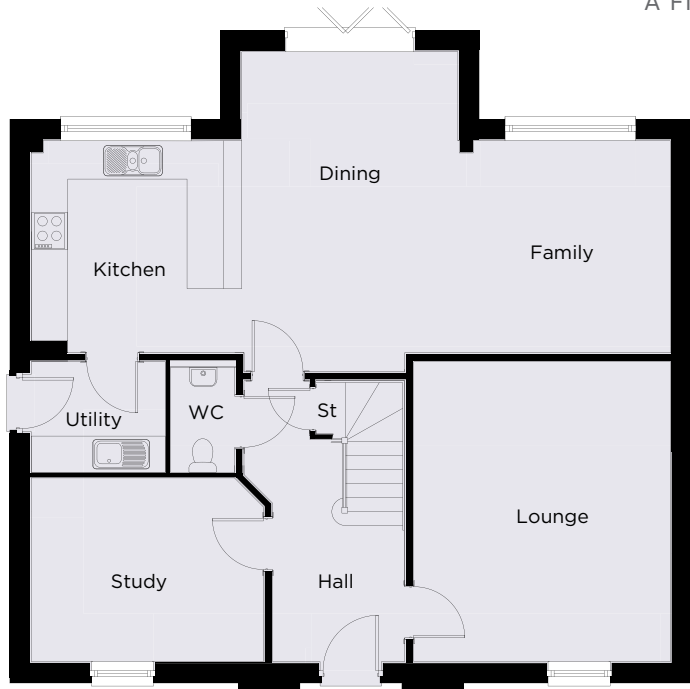




Computer generated image shows Peverell home

THE PEVERELL

A FIVE BEDROOM DETACHED HOME



GROUND FLOOR

Kitchen	3.48m x 3.46m	11'5" x 11'4"
Dining	5.25m x 3.55m	17'3" x 11'8"
Family	3.48m x 3.49m	11'5" x 11'5"
Lounge	4.93m x 4.22m	16'2" x 13'10"
Study	3.82m x 3.02m	12'6" x 9'11"

FIRST FLOOR

Bedroom 1	4.28m x 3.47m	14'0" x 11'5"
Dressing	2.24m x 2.15m	7'4" x 7'1"
Bedroom 2	3.75m x 2.76m	12'4" x 9'1"
Bedroom 3	3.48m x 2.86m	11'5" x 9'5"
Bedroom 4	3.16m x 2.53m	10'5" x 8'3"
Bedroom 5	2.76m x 2.76m	9'1" x 9'1"

Elevation treatments may vary by plot. Plots 10 & 12 will have extra windows as indicated by *

